

3.0G ROOF GARDEN



Bruttowohnfläche

3. OG 129.7 m²

DG 84.7 m²

Total: 214.4 m²



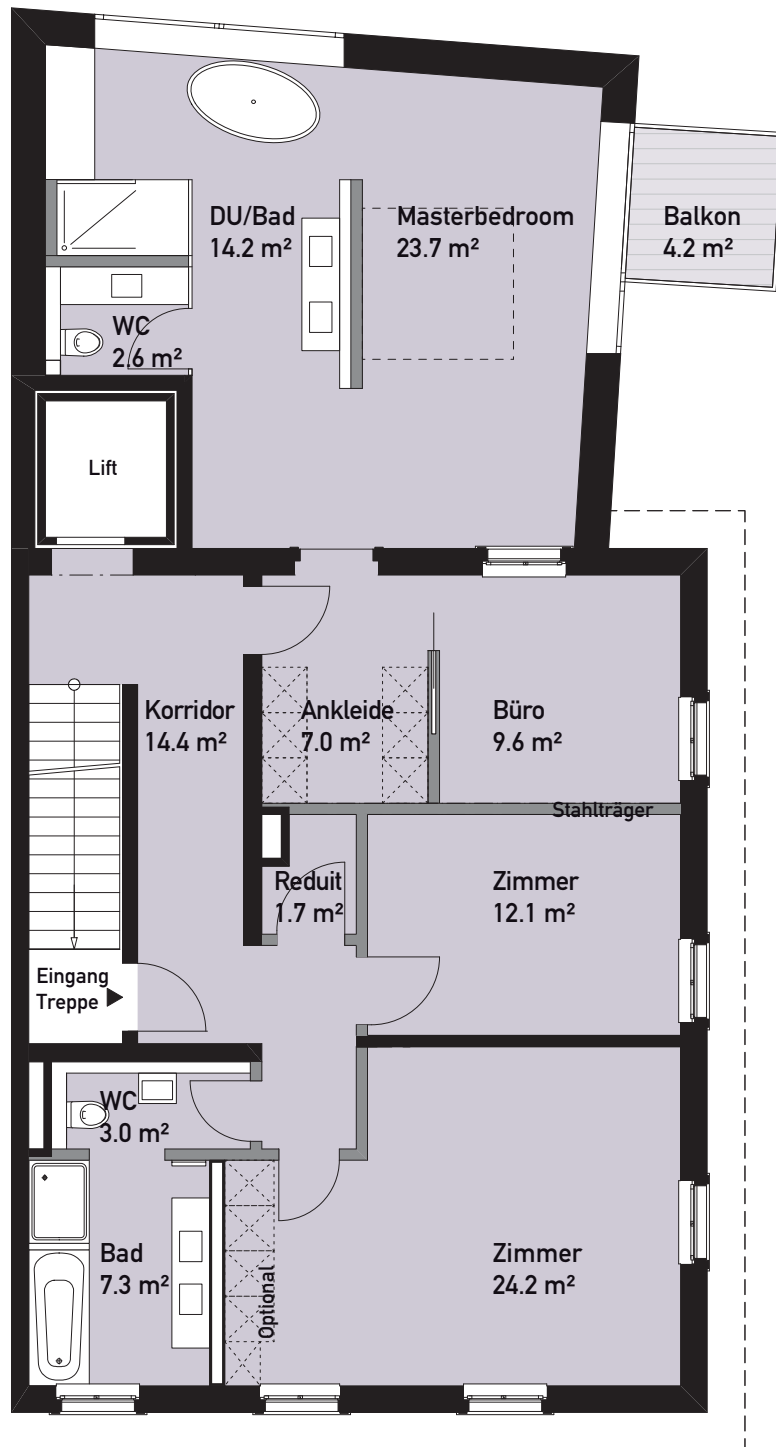
Balkon 3. OG

4.2 m²

Terrasse DG

40.5 m²

■ = nicht tragende Wände



Bruttowohnfläche

3. OG 129.7 m²

DG 84.7 m²

Total: 214.4 m²




Balkon 3. OG

4.2 m²

Terrasse DG

40.5 m²

 =nicht tragende Wände

